



# **EZ MultiFit Bracket Installation Instructions**

## **EZ-3 & EZ-4**

# Disclaimer:

The MultiFit Bracket is the premier mounting option for Bearing Protection Kits™ (BPKs) for a wide array of motor shaft sizes and end cap configurations.

It is crucial for the customer to provide accurate information for Helwig to provide the correct hardware and BPK configuration.

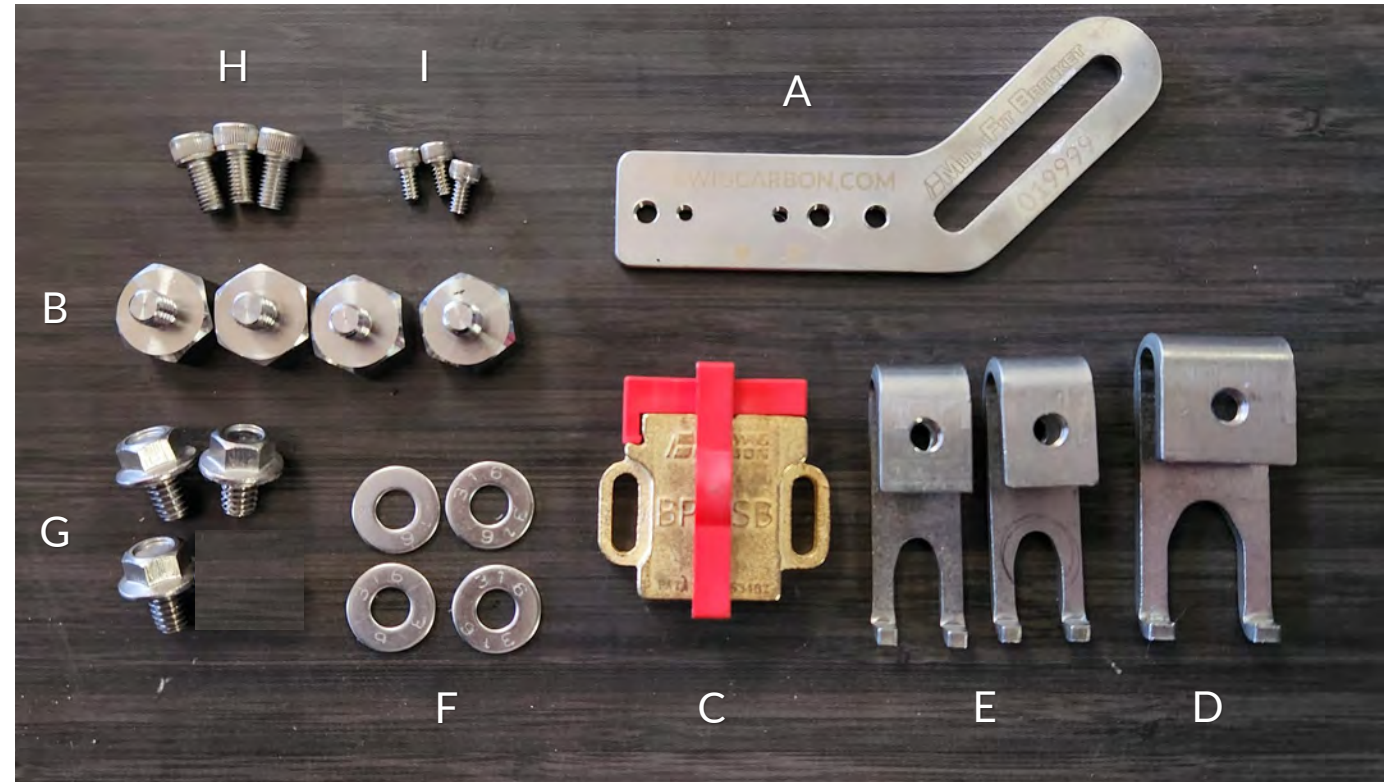
If the incorrect hardware or BPK was provided, please contact our Customer Service department at either of the following numbers:

(800) 962-4851

(414) 354-2411

# Included Items

- A. Universal Bracket
- B. Stackable Standoffs
- C. BPK\*
- D. Large Mounting Clip
- E. Small Mounting Clips
- F. 1/4" Washers
- G. Serrated Flange Bolts
- H. Large Mounting Bolts
- I. Small Mounting Bolts



\*The BPK included with the MultiFit Bracket is determined based on shaft size and application.

# Required but not Included Items

- Socket wrench/adjustable wrench
  - TBD – Based on motor bolt size
  - 5/8" for Stackable Stand-offs
  - 3/16" for Serrated Flange Bolts
- Allen wrenches
  - 7/64" Allen Wrench
  - 5/32" Allen Wrench



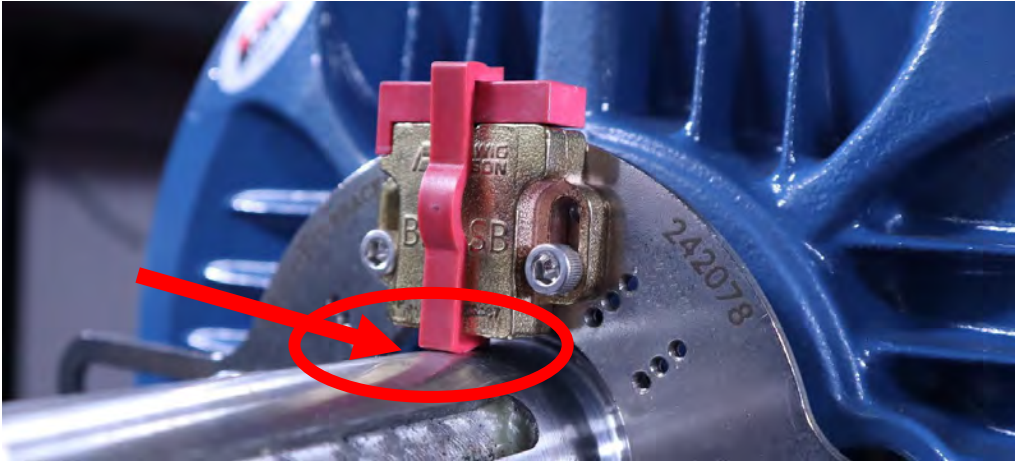


# Choosing Mounting Clip

- Your kit includes two sizes of mounting clips, large (A) and small (B)
- Small mounting clips (B) work with bolts ranging from 1/4" – 8mm
- Large mounting clips (A) work with bolts ranging from 5/16" – 1/2"

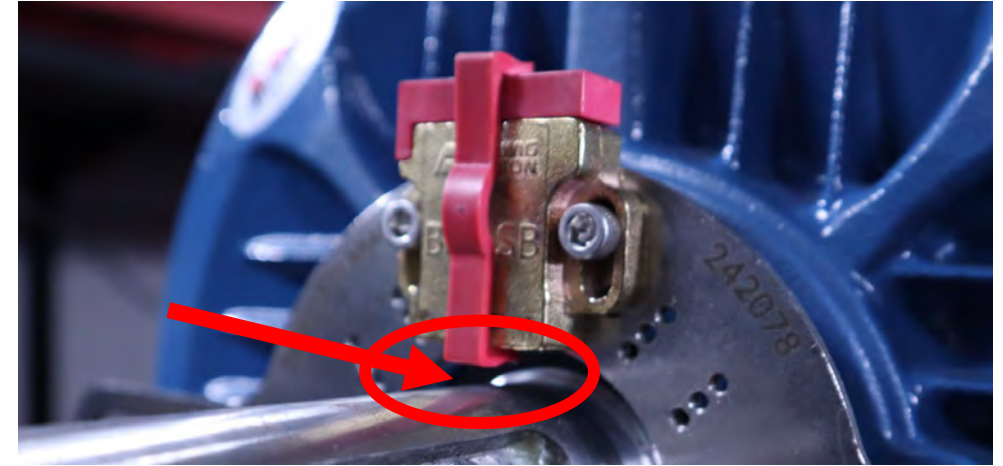


# BPK™ Positioning



## Correct Installation

- BPK is centered on shaft
- Red retainer clip is lightly contacting the shaft
- BPK is running on smooth surface



## Incorrect Installation

- BPK is not centered
  - Move bracket left or right
- Red clip is not contacting the shaft
  - Switch mounting holes
- BPK is not running on smooth surface
  - Move bracket in or out

# Installing Stand-Offs

1. DO NOT REMOVE ANY BOLTS
2. Using socket or wrench, loosen one bolt, leaving enough room for a mounting clip to fit behind the bolt heads
3. Slide a stand-off between the bolt head and the motor face.
4. Loosely tighten clip in place
5. Repeat steps 2 and 3 for second bolt
6. Tighten both bolts\* while keeping the stand-offs aligned tangent to the shaft - as shown - Some variance from tangent is allowable



\* Consult motor manufacturer documentation for proper torque specification.



# Bracket Offset

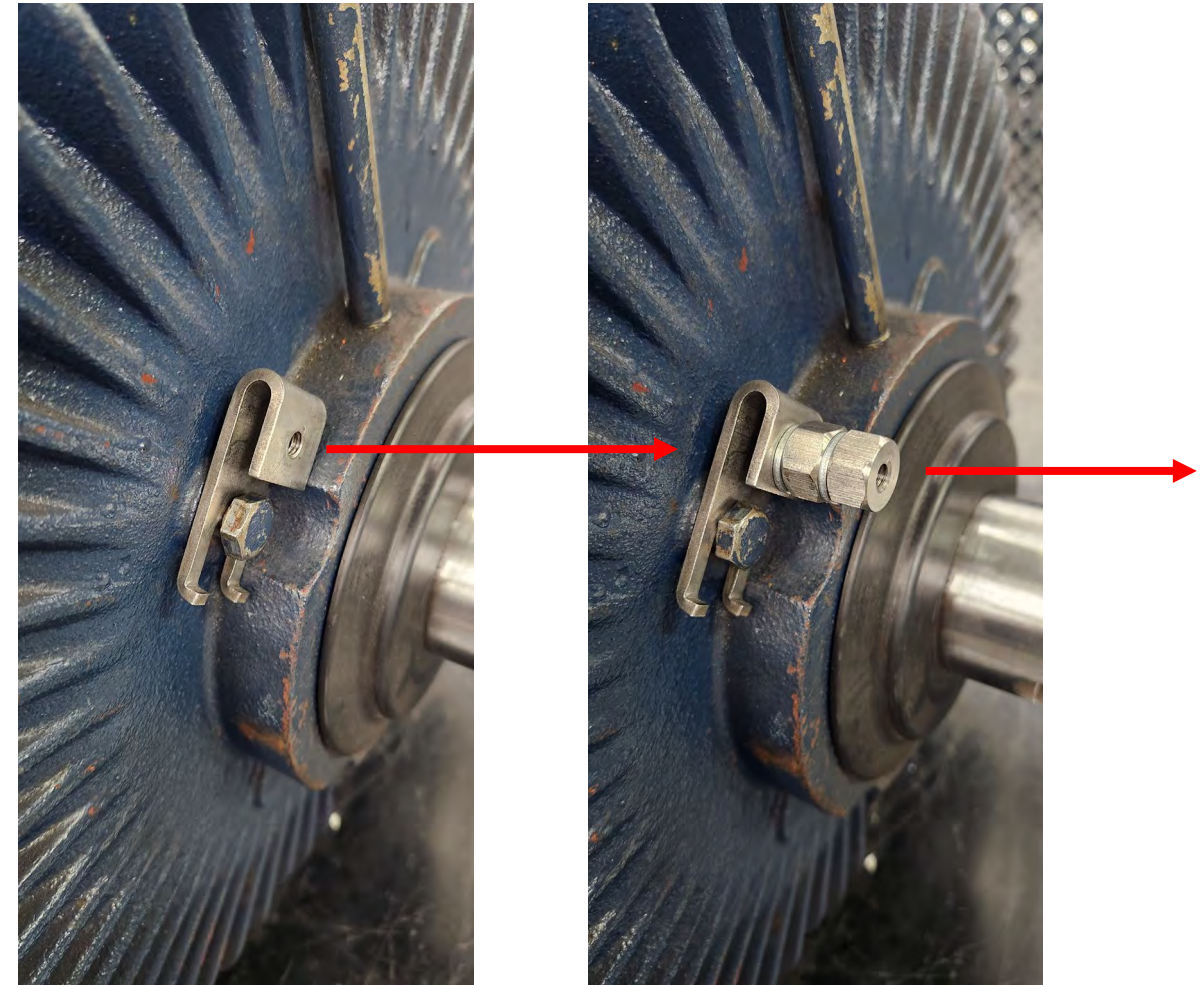
- Based on configuration, determine optimal position of the bracket. This will be where the bracket is closest the motor face and still allows the BPK to ride on a clean and unobstructed section of the shaft.





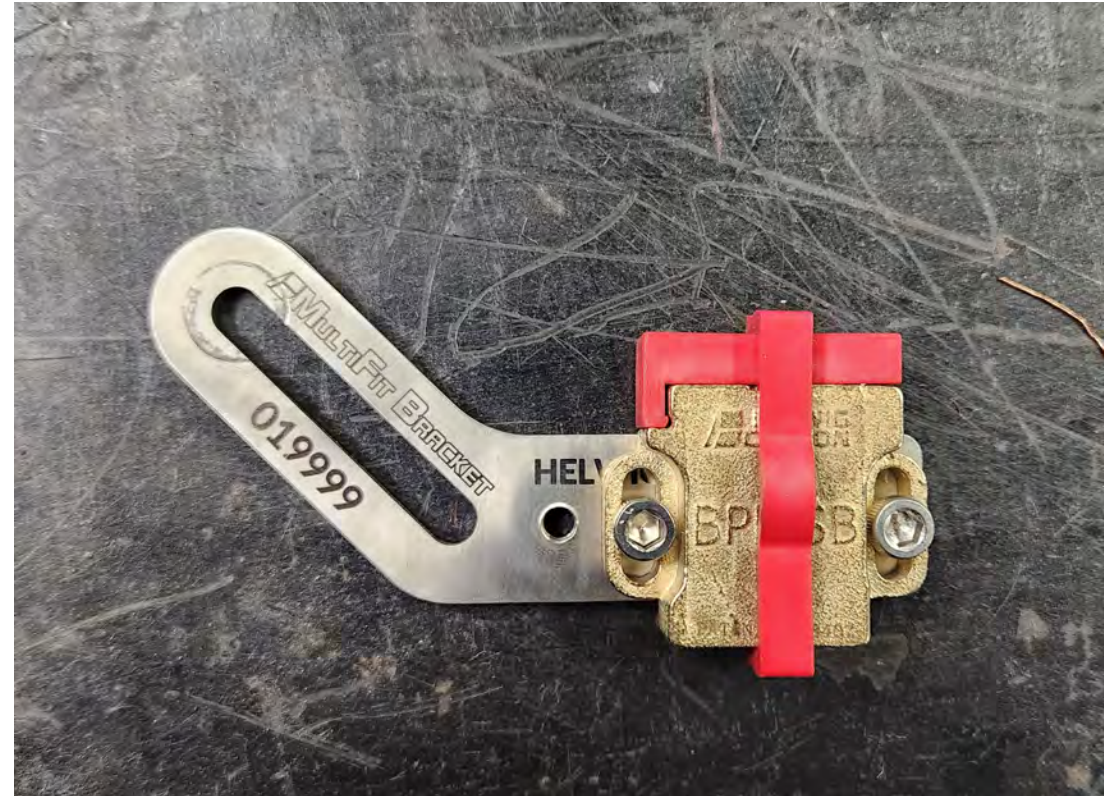
# Stackable Standoffs

- Stackable stand-offs can be used to augment the location of your BPK Bracket Kit
- Stack up to 4 for major adjustments or use the included washers in between stand-offs to make more minor adjustments
- Tighten to 30 in-lb



# Pre-install BPK to Bracket

1. Install your included BPK to the bracket using included bolts
  - Small mounting bolts for the BPK-IM5 (not pictured)
  - Large mounting bolts for the BPK-SB (pictured) and BPK-AM (not pictured)
2. Loosely tighten bolts for possible future adjustment





# Installing MultiFit Bracket

1. Assemble bracket with BPK pre-installed to the clip or stackable standoff depending on your configuration using included mounting bolts
2. Align BPK to shaft, as shown.
3. Tighten all mounting bolts to 30 in-lb

NOTE: To aid with proper BPK alignment when it's necessary to install bracket backwards, assemble the BPK onto bracket and release the brush before tightening the bracket into place.

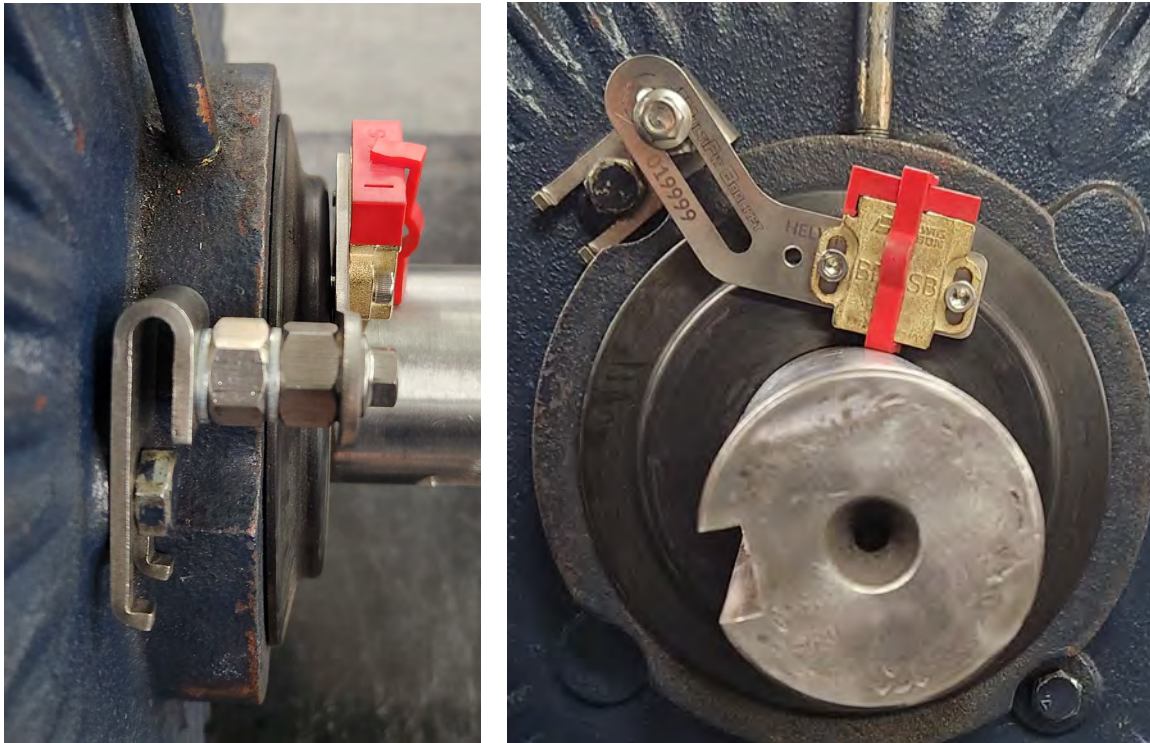




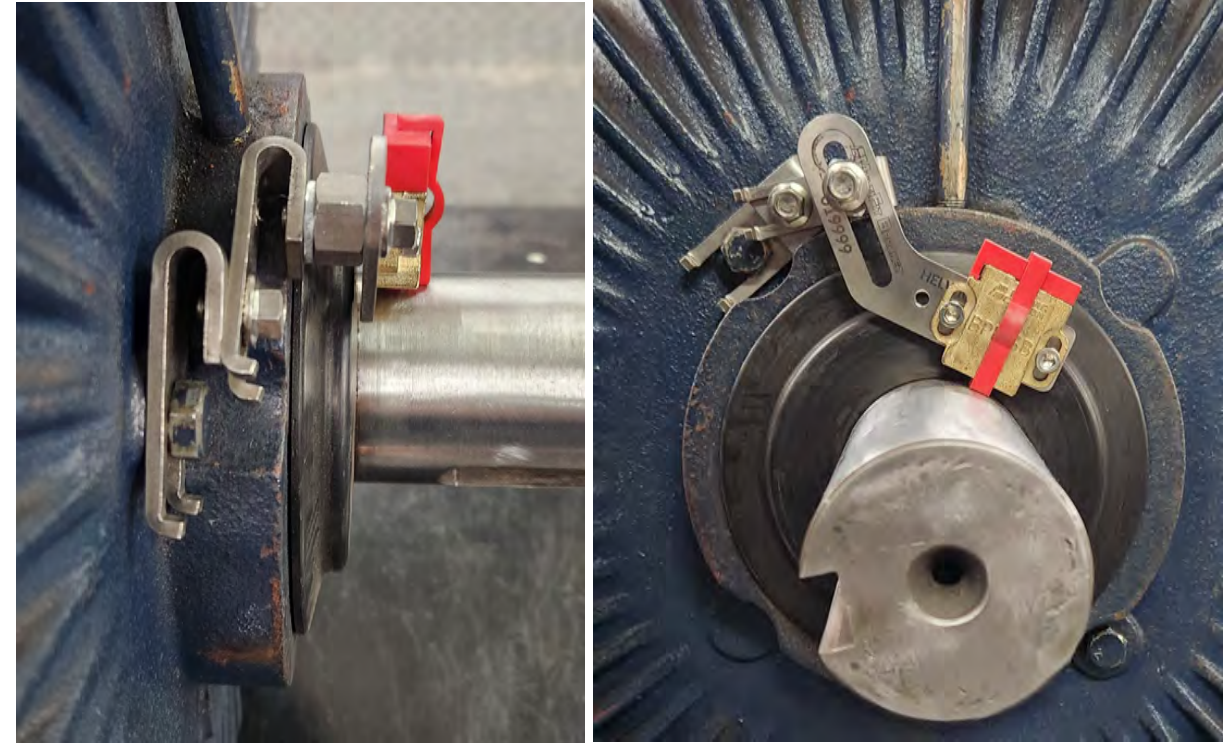
# Installing MultiFit Bracket

Examples of Different Configurations

With Single Stand-off

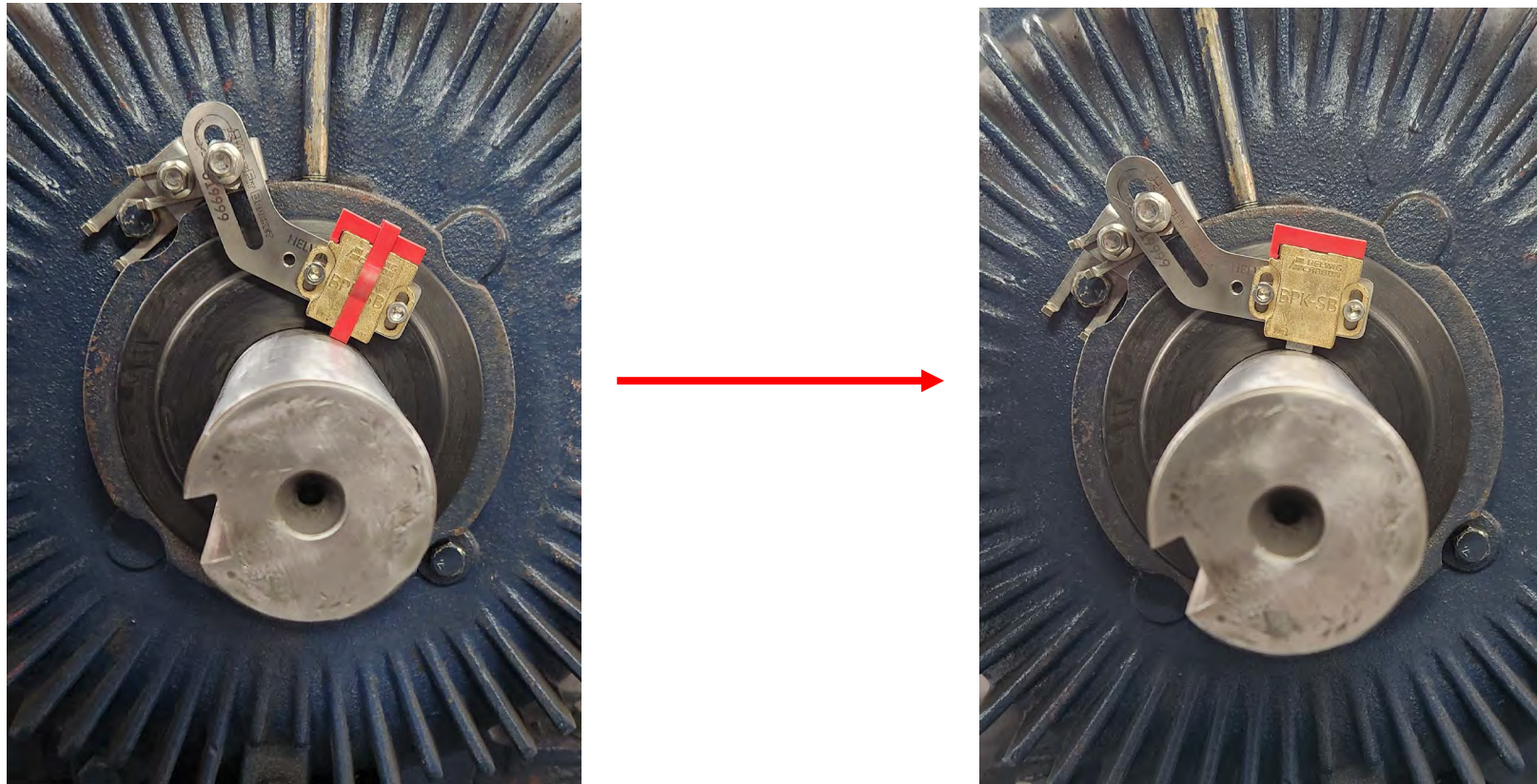


With 2 Stand-offs





# Release BPK™ Brush



Pull red retainer clip and rotate shaft manually to ensure brush does not contact the keyway and that the entire brush thickness is in contact with the shaft.