



EZ MultiFit Bracket Installation Instructions

EZ-1 & EZ-2

Disclaimer:

The MultiFit Bracket is the premier mounting option for Bearing Protection Kits™ (BPKs) for a wide array of motor shaft sizes and end cap configurations.

It is crucial for the customer to provide accurate information for Helwig to provide the correct hardware and BPK configuration.

If the incorrect hardware or BPK was provided, please contact our Customer Service department at either of the following numbers:

(800) 962-4851

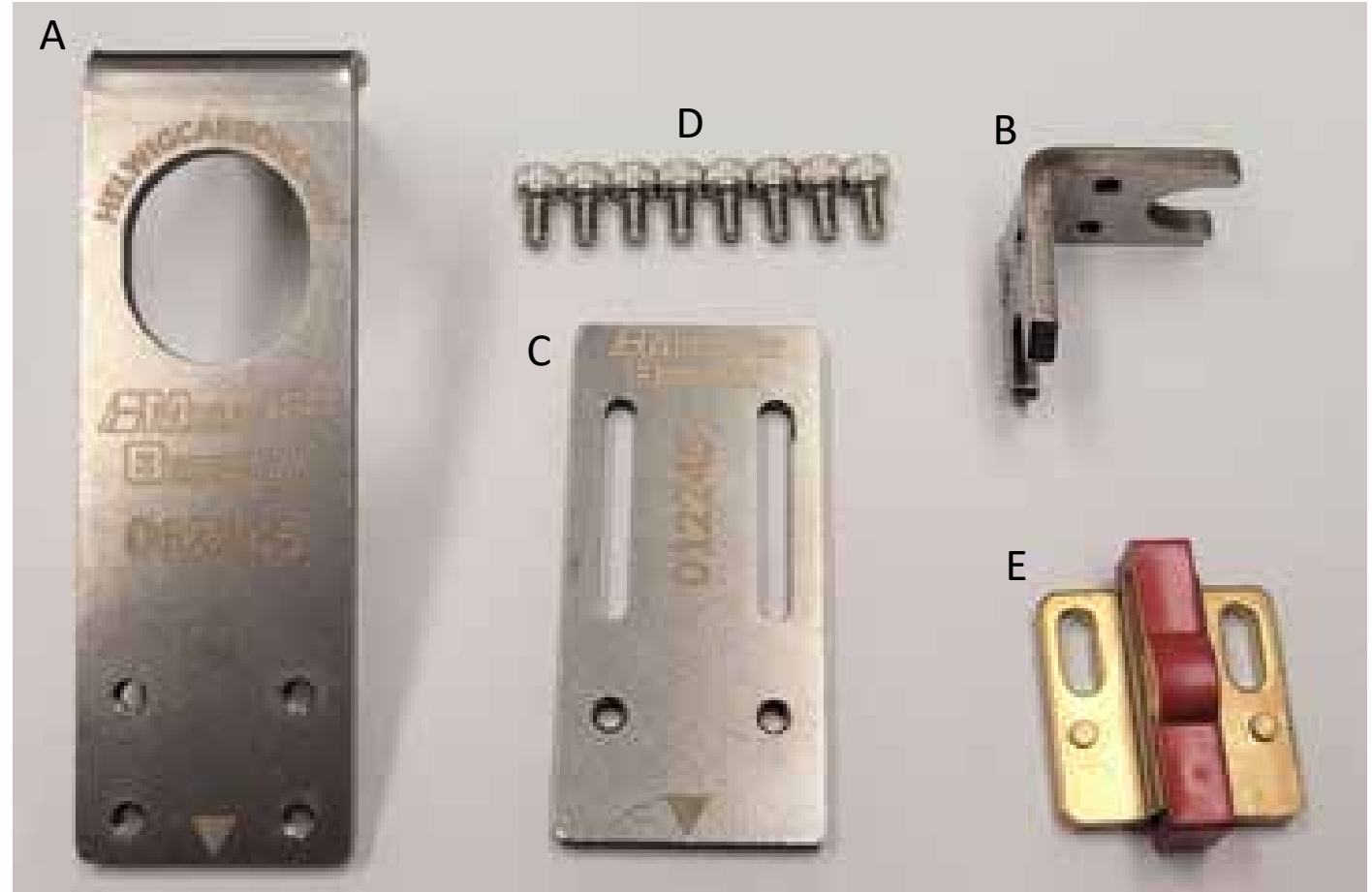
(414) 354-2411

Included Items

- A. Down Bracket
- B. Mounting Bracket
- C. Extension Plate
- D. Mounting Bolts
- E. BPK*

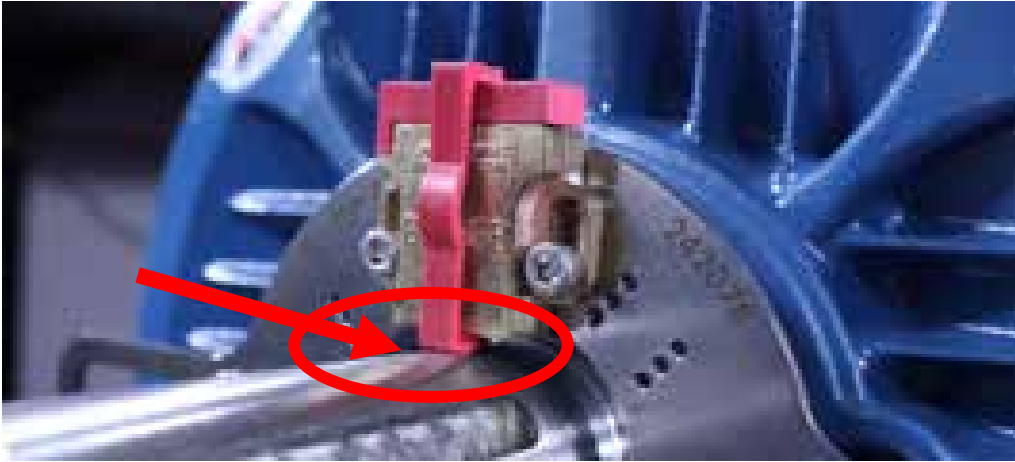
Required but not Included Items

- Socket Wrench (Motor Model Dependent)
- Wrench (Motor Model Dependent)
- 7/64" Allen Wrench (For Mounting Bolts)
- 5/32" Allen Wrench (For Mounting Bolts)



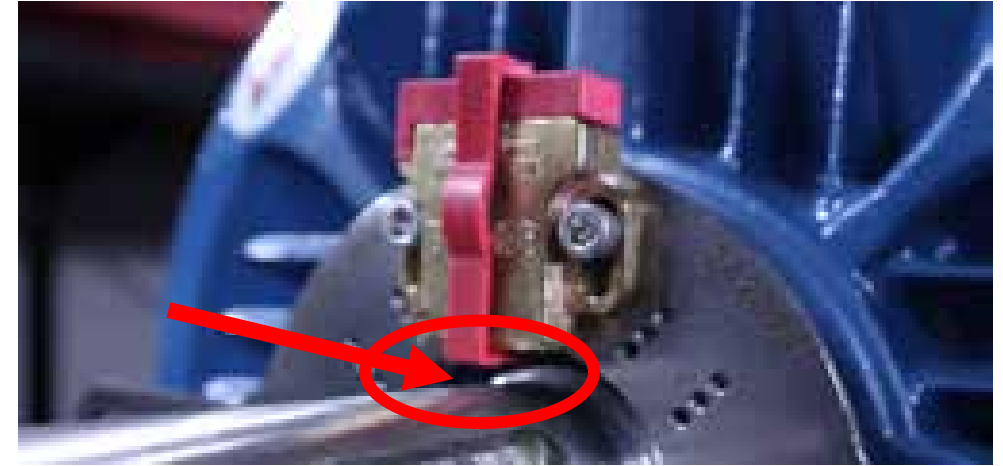
*The BPK included with the MultiFit Bracket is determined based on shaft size and application.

BPK™ Positioning



Correct Installation

- BPK is centered on shaft
- Red retainer clip is lightly contacting the shaft
- BPK is running on smooth surface



Incorrect Installation

- BPK is not centered
 - Move bracket left or right
- Red clip is not contacting the shaft
 - Switch mounting holes
- BPK is not running on smooth surface
 - Move bracket in or out

Mounting Bracket Orientation

- Identify the bolt diameter of the bolt being used for mounting MF Bracket.



- Select the correct orientation of the mounting bracket based on the closest fit to the bolt diameter.

#12 – 1/4

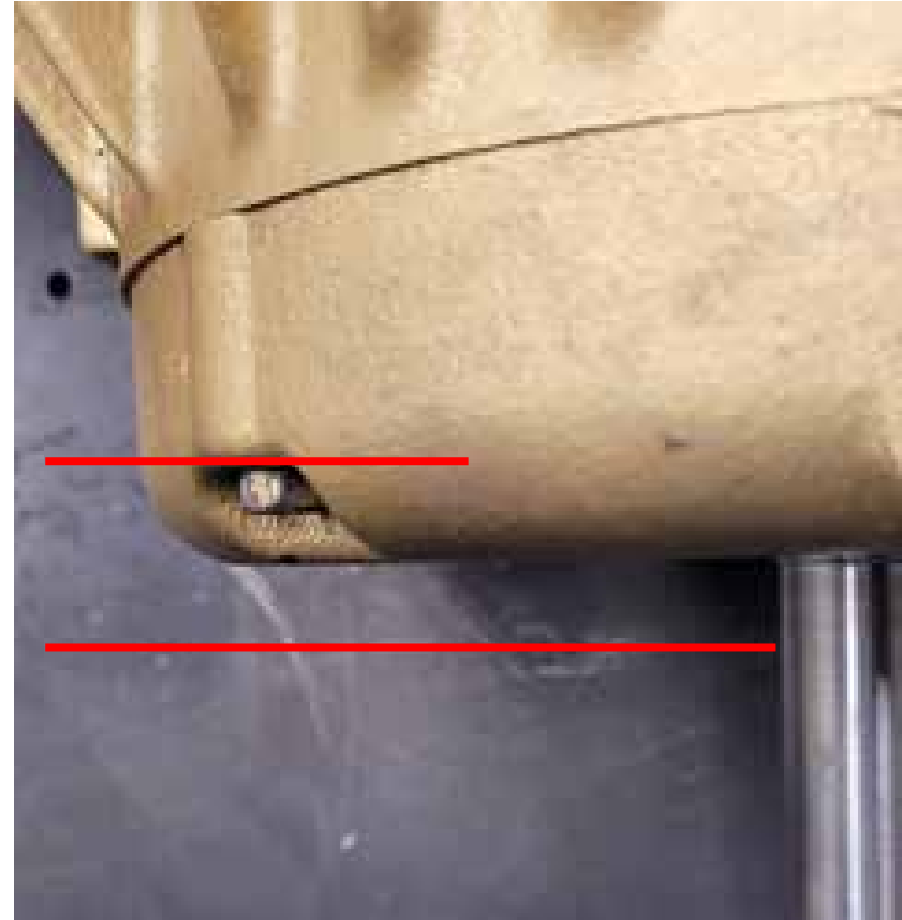


5/16 – 3/8



Bracket Offset

- Based on configuration, determine optimal position of the down bracket. This will be where the down bracket is closest the motor face and still allows the BPK to ride on a clean and round portion of the shaft.



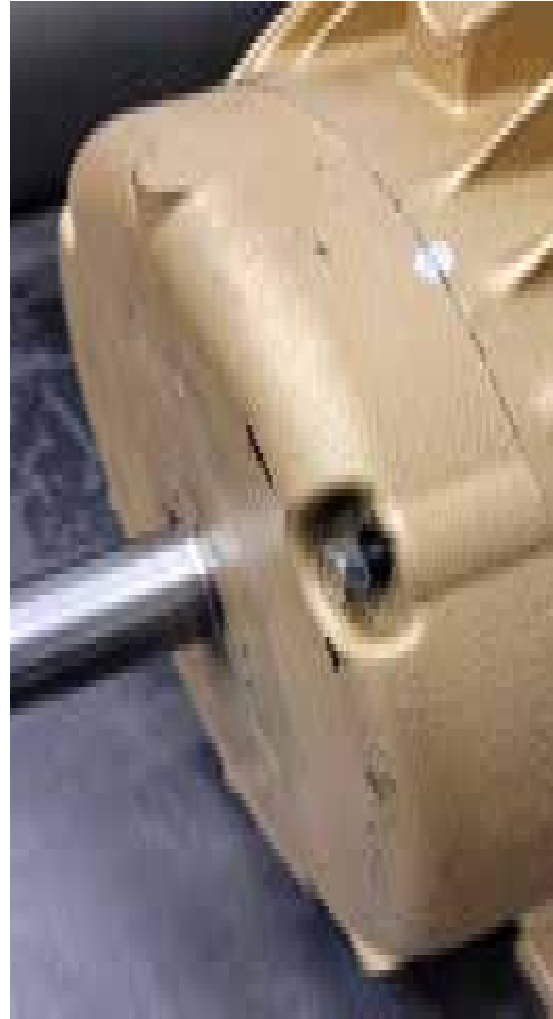
Down Bracket Assembly



- Choose the appropriate combination based on the motor configuration and the bracket offset needed and bolt the mounting bracket to the down bracket

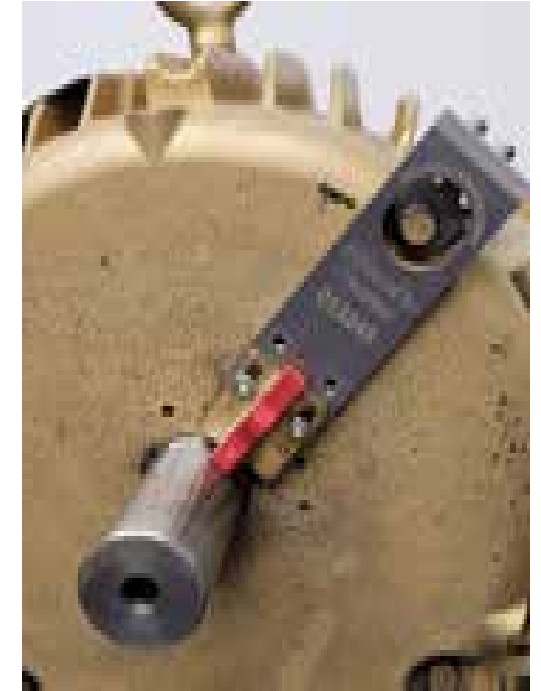
Mounting The Bracket

- Loosen Motor Bolt
- Slide Assembled Bracket Onto Bolt
- Using Centering Triangle, Align bracket
- Tighten bracket into place using socket



Assembling BPK To Bracket

- Loosely hold BPK over bracket to determine which mounting holes to use
- Remove down bracket and fasten BPK loosely with two bolts
- Re-attach down bracket to mounting bracket
- Align and adjust the BPK so that the red clip is sitting flush against the shaft
- Tighten bolts holding BPK to down bracket



Alternate Assembling



Release BPK™ Brush



Pull red retainer clip and rotate shaft manually to ensure brush does not contact the keyway and that the entire brush thickness is in contact with the shaft.